

VAPB P56S Variant Sensitizes ALS Patient-Derived Motor Neurons to the Integrated Stress Response

Curran Landry¹, James Costanzo¹, Miguel Mitne-Neto², Mayana Zatz³, Ashleigh Schaffer¹, Maria Hatzoglou¹, Alysson Muotri⁴, Helen Cristina Miranda^{1,5,6}

¹. Department of Genetics and Genome Sciences, Case Western Reserve University, Cleveland, OH, USA ². Paulo Gontijo Institute (IPG), São Paulo, Brazil ³. Human Genome and Stem Cell Center, Biosciences Institute, University of São Paulo, São Paulo, Brazil ⁴. Department of Pediatrics/Rady Children's Hospital San Diego, School of Medicine, University of California, San Diego, La Jolla, CA, USA ⁵. Department of Neurosciences, Case Western Reserve University, Cleveland, OH, USA ⁶. Center for RNA Science and Therapeutics, Case Western Reserve University, Cleveland, OH, USA

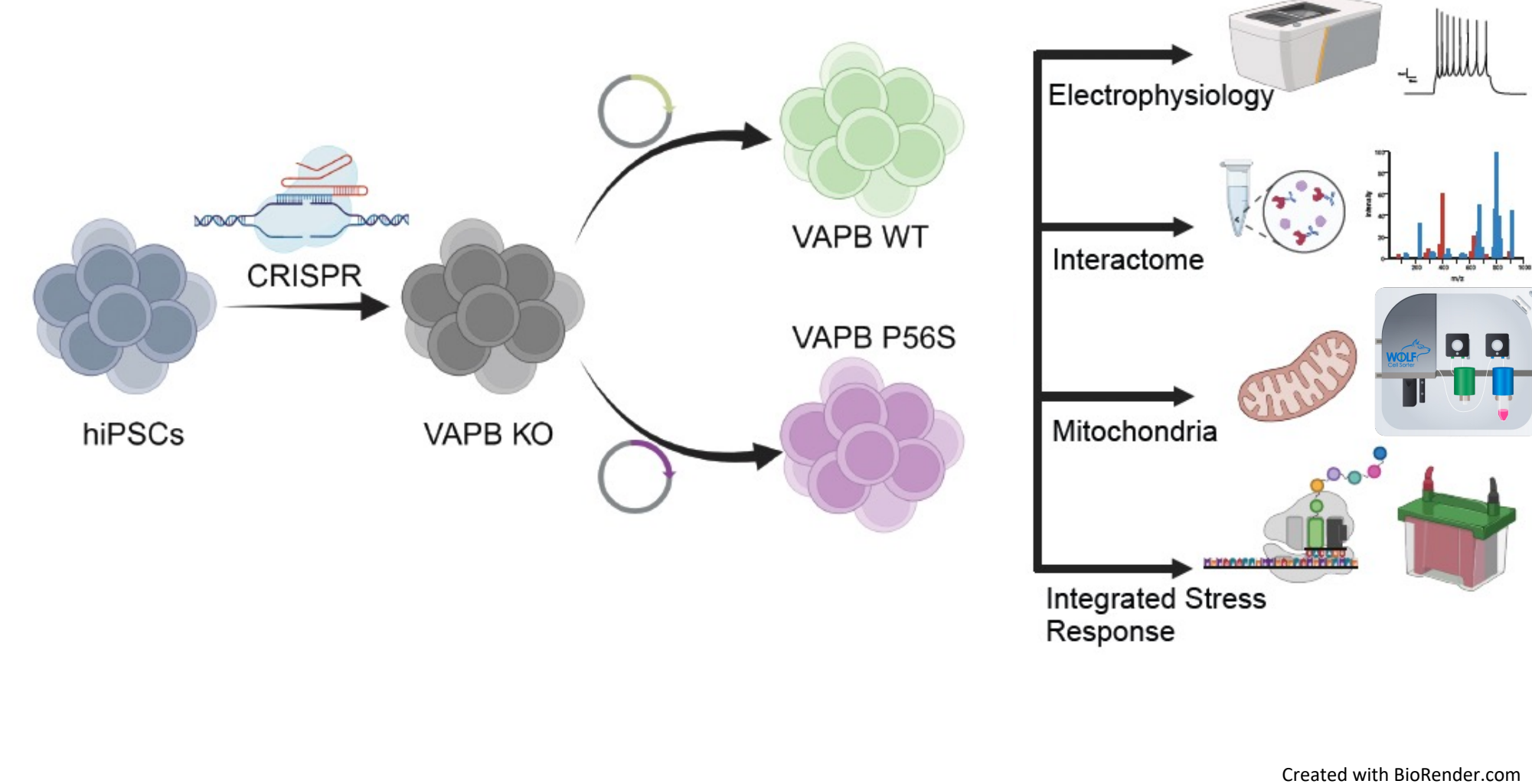


ABSTRACT

• Amyotrophic Lateral Sclerosis (ALS), also known as Lou Gehrig's disease, is the most common adult-onset motor neuron (MN) disease. An autosomal dominant c.166C>T mutation in the VAPB gene leads to a change of a proline to a serine at amino acid position 56 (P56S) and is known to be the causative mutation of ALS8. However, the mechanism through which this mutation causes disease remains unknown.

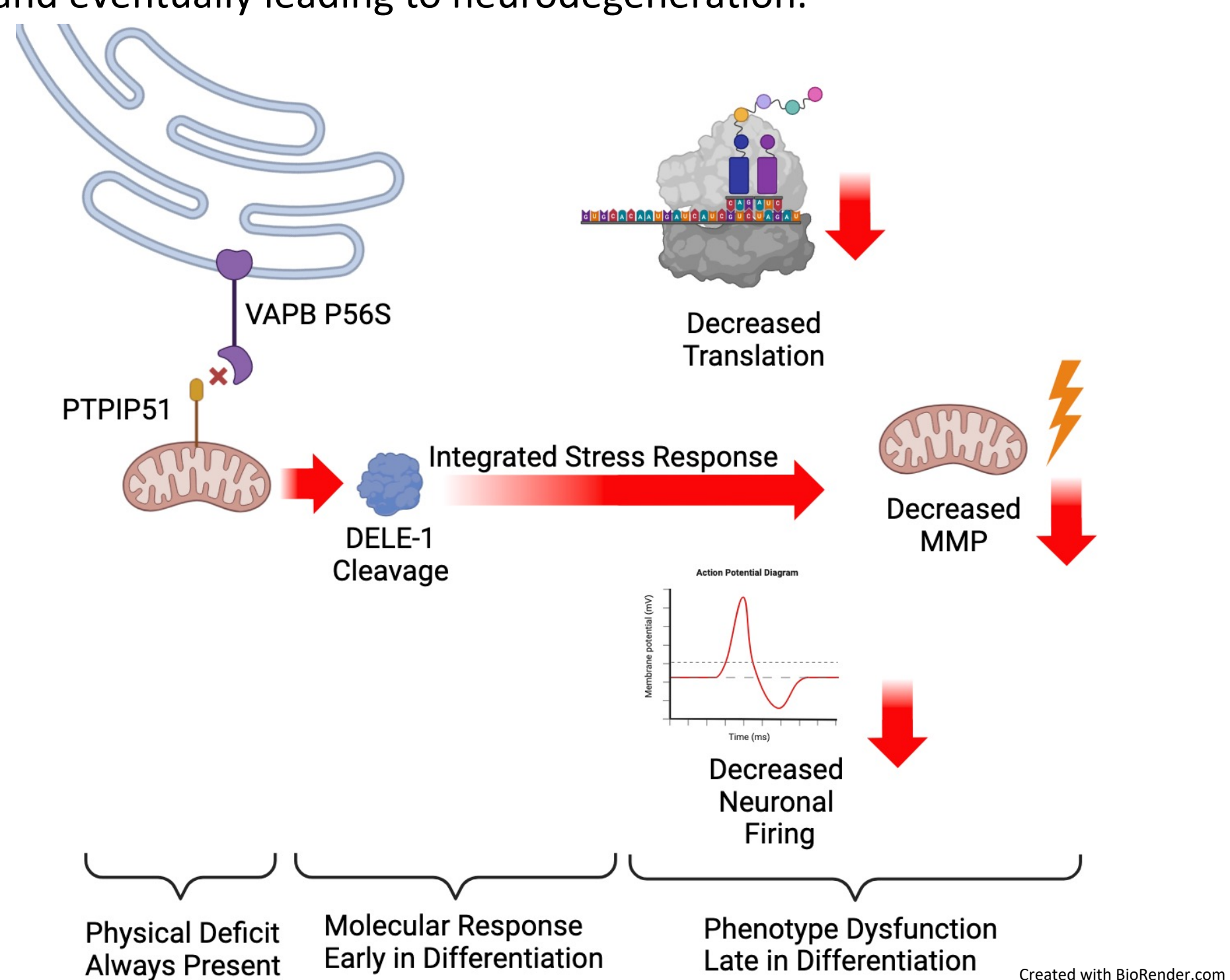
• VAPB is an ER tethering protein, and previous literature has shown that the P56S mutation disrupts the binding to PTPIP51, a mitochondrial tethering protein.

• We obtained ALS Type VIII patient fibroblast samples, reprogrammed them into iPSC, and then used CRISPR Cas-9 to knockout the VAPB gene. We then inserted VAPB WT or VAPB P56S genes under the control of a tetracycline response element, creating doxycycline-inducible VAPB WT or VAPB P56S lines.



CONCLUSIONS

- The VAPB P56S mutation causes loss of PTPIP51 binding and a reduction in ER-mitochondrial contact in affected motor neurons.
- In addition, these cells exhibit the following phenotypes
 1. Decreased neuronal firing rate
 2. Decreased mitochondrial membrane potential (JC-1)
 3. Increased ER Sensitivity and Impaired Recovery
- Upon further investigation, it was shown that the VAPB P56S mutation constitutively activates the Integrated Stress Response via DELE-1 cleavage due to mitochondrial stress.
- The Integrated Stress Response Pathway was shown to be driving the phenotypes listed above, as treatment with ISRIB rescued them.
- In conclusion, it appears that the VAPB P56S mutation causes loss of PTPIP51 binding, resulting in a reduction of ER-Mitochondrial contact, leading to a buildup of mitochondrial stress, thereby activating the ISR and eventually leading to neurodegeneration.



RESULTS

A Human iPSC-Derived Motor Neuron Differentiation

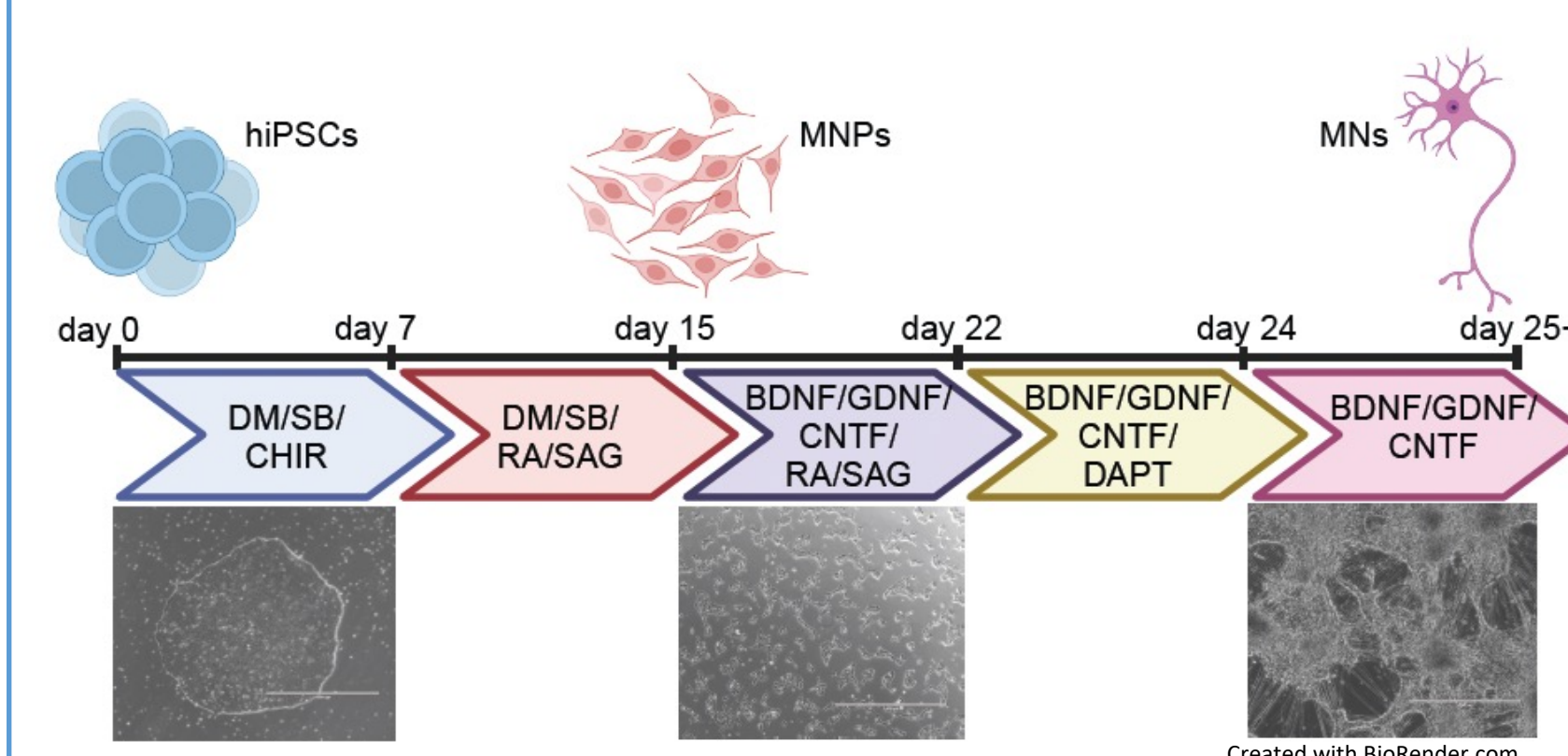


Figure 1: VAPB P56S Causes a Decrease in Neuronal Firing. Doxycycline inducible patient iPSC-derived motor neurons were differentiated using dual-SMAD inhibition and then plated on a 48-well MEA plate (1x10⁶ cells/well) and electrophysiology recordings were taken approximately every other day on the Maestro Pro MEA system (Axion Biosystems). The P56S line shows a significant decrease in firing compared to WT beginning on day 41 of differentiation, after normalization to cell count.

Figure 2: VAPB P56S Results in a Loss of ER-Mitochondrial Contact.

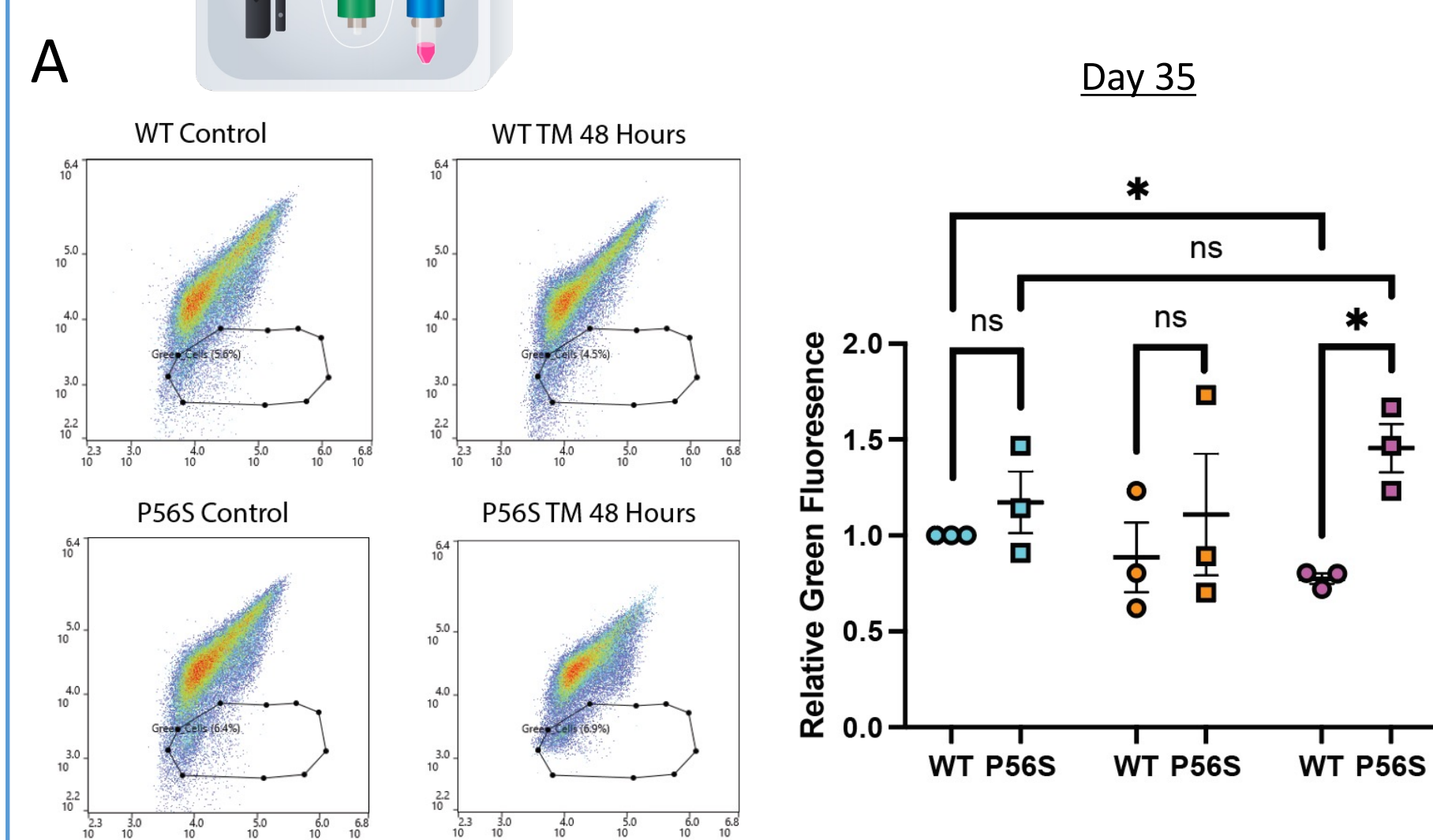
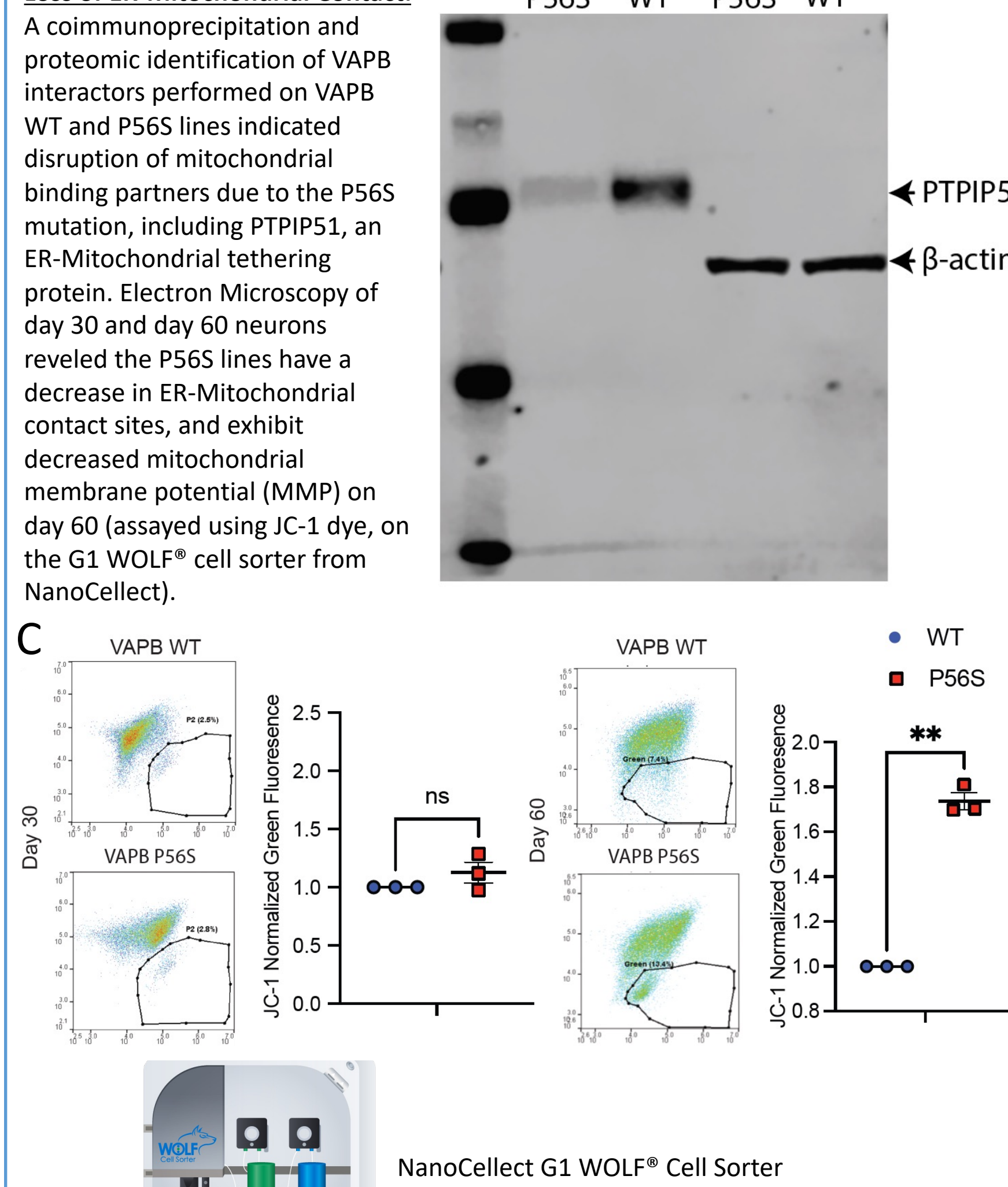
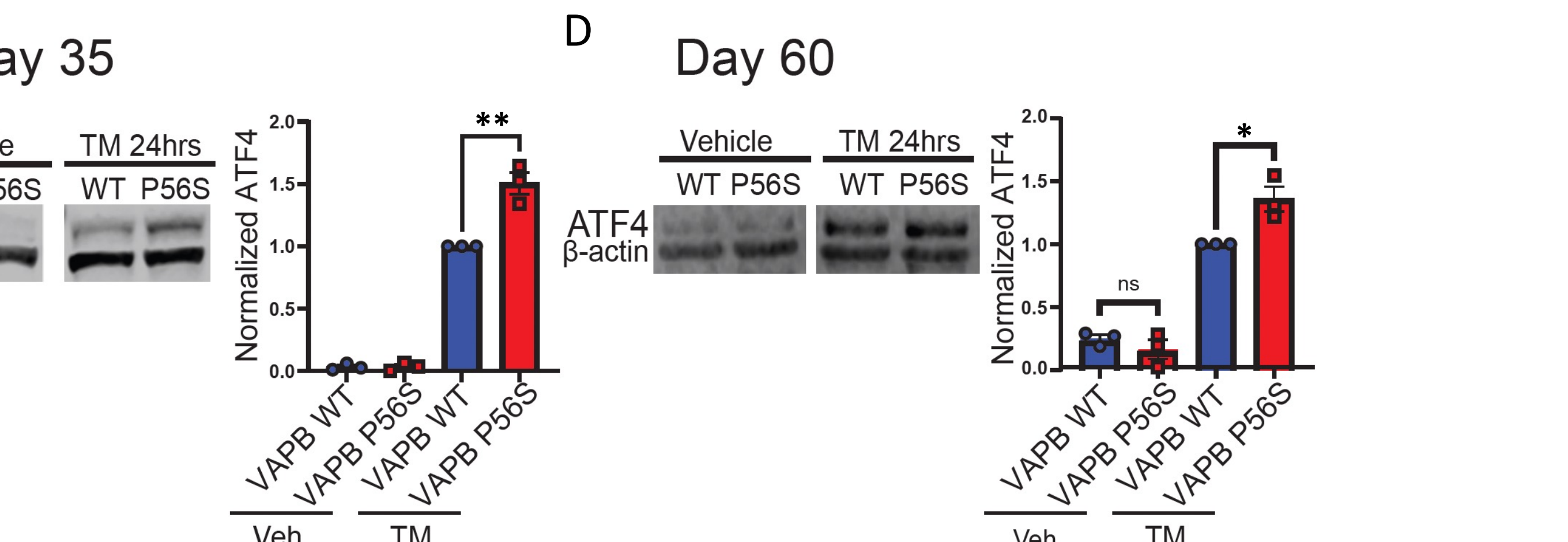
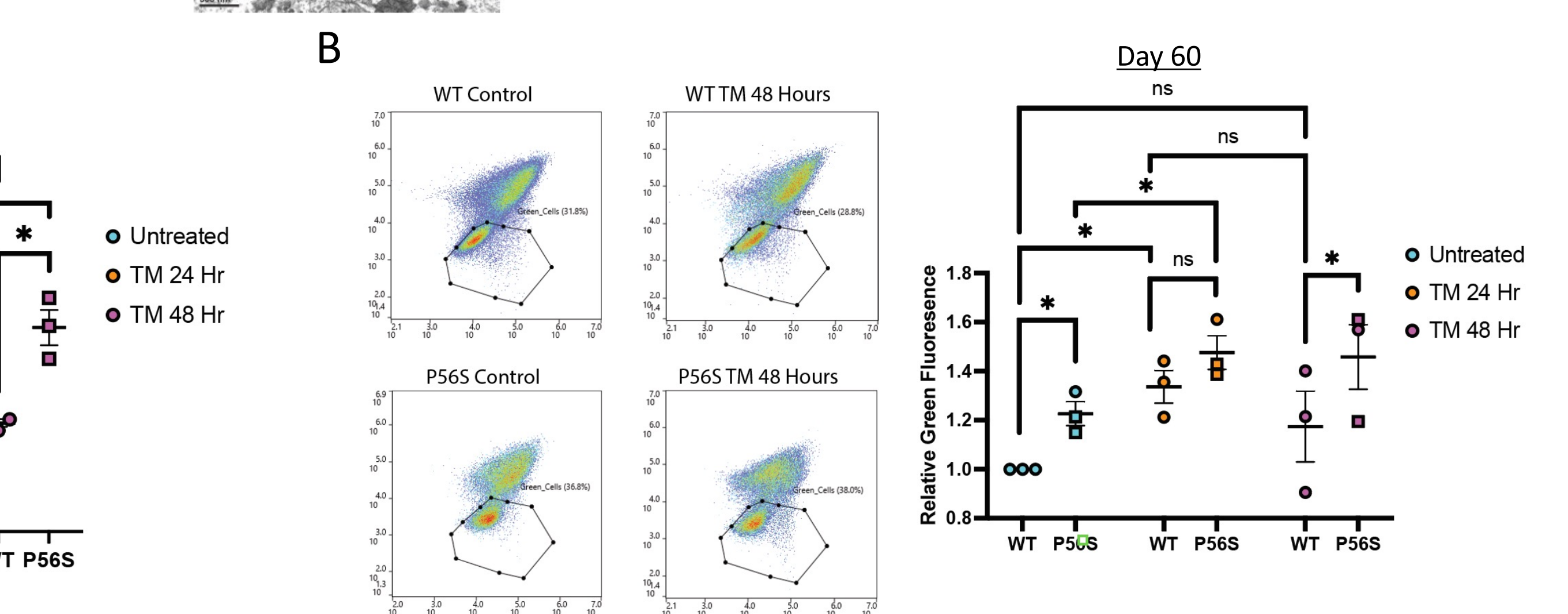
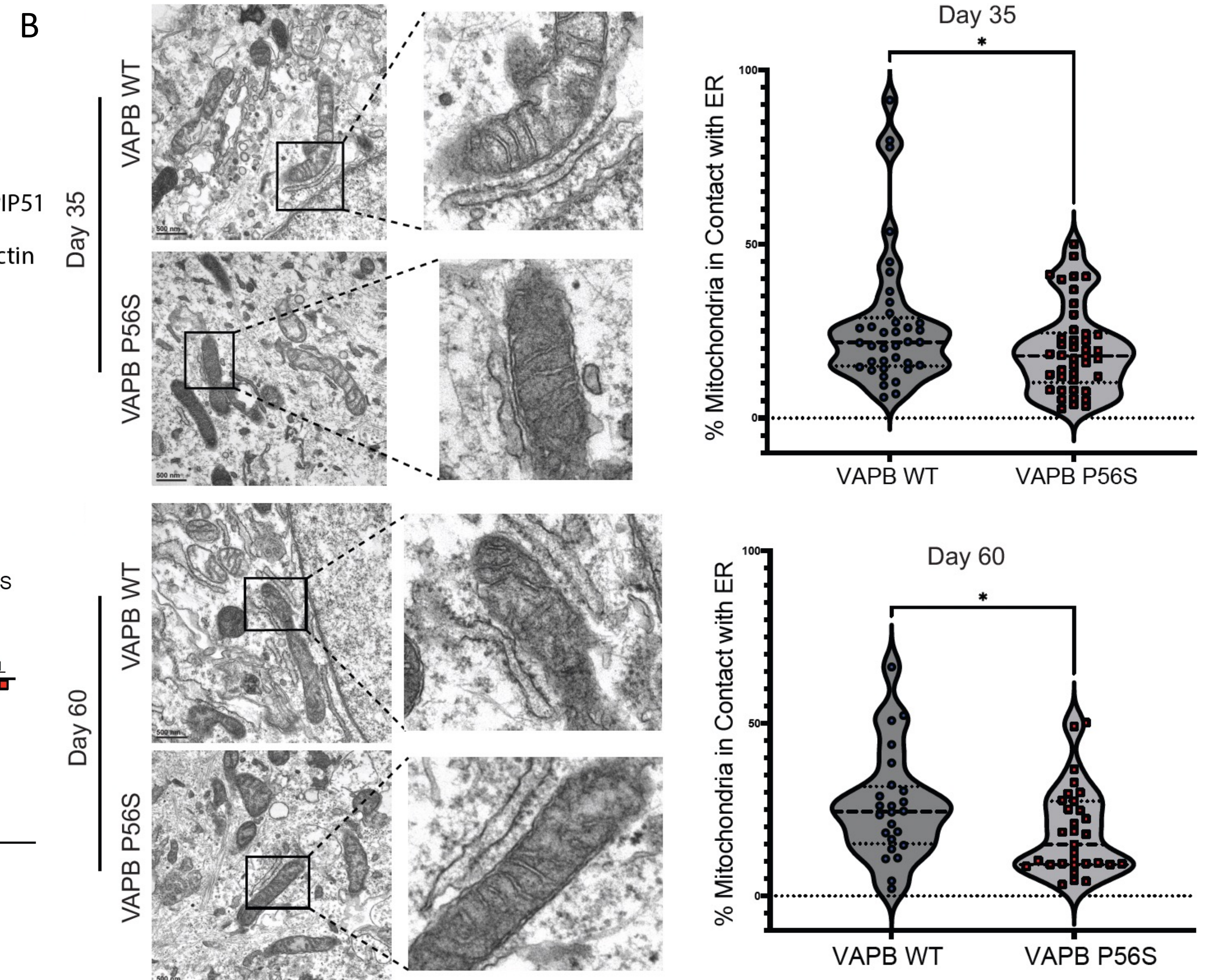
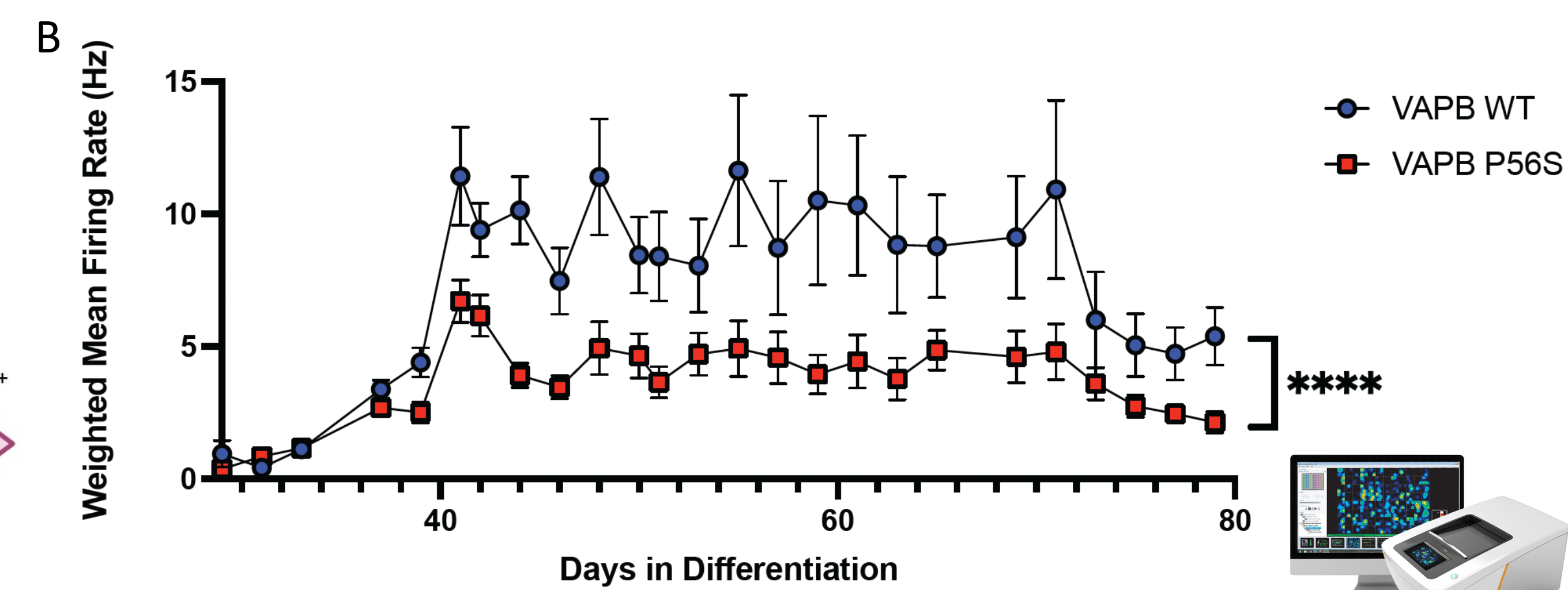


Figure 3: VAPB P56S Cells Have Increased ER Sensitivity and Decreased Adaptation to Stressors. Dosing the VAPB P56S and WT motor neurons with tunicamycin (7.5ug/mL) for 24 and 48 hours, followed by assay with the JC-1 dye showed a decrease in MMP at 48 hours in the P56S lines on day 35, while on day 60 both lines exhibited a decrease in MMP at 24 hours, however by 48 hours the WT were able to adapt while the P56S were not. Given the nature of tunicamycin as an ER stressor, we wanted to see if a classical effector of ER stress response (ATF-4) was also elevated, and it had significantly higher expression in the P56S lines at both timepoints.



RESULTS

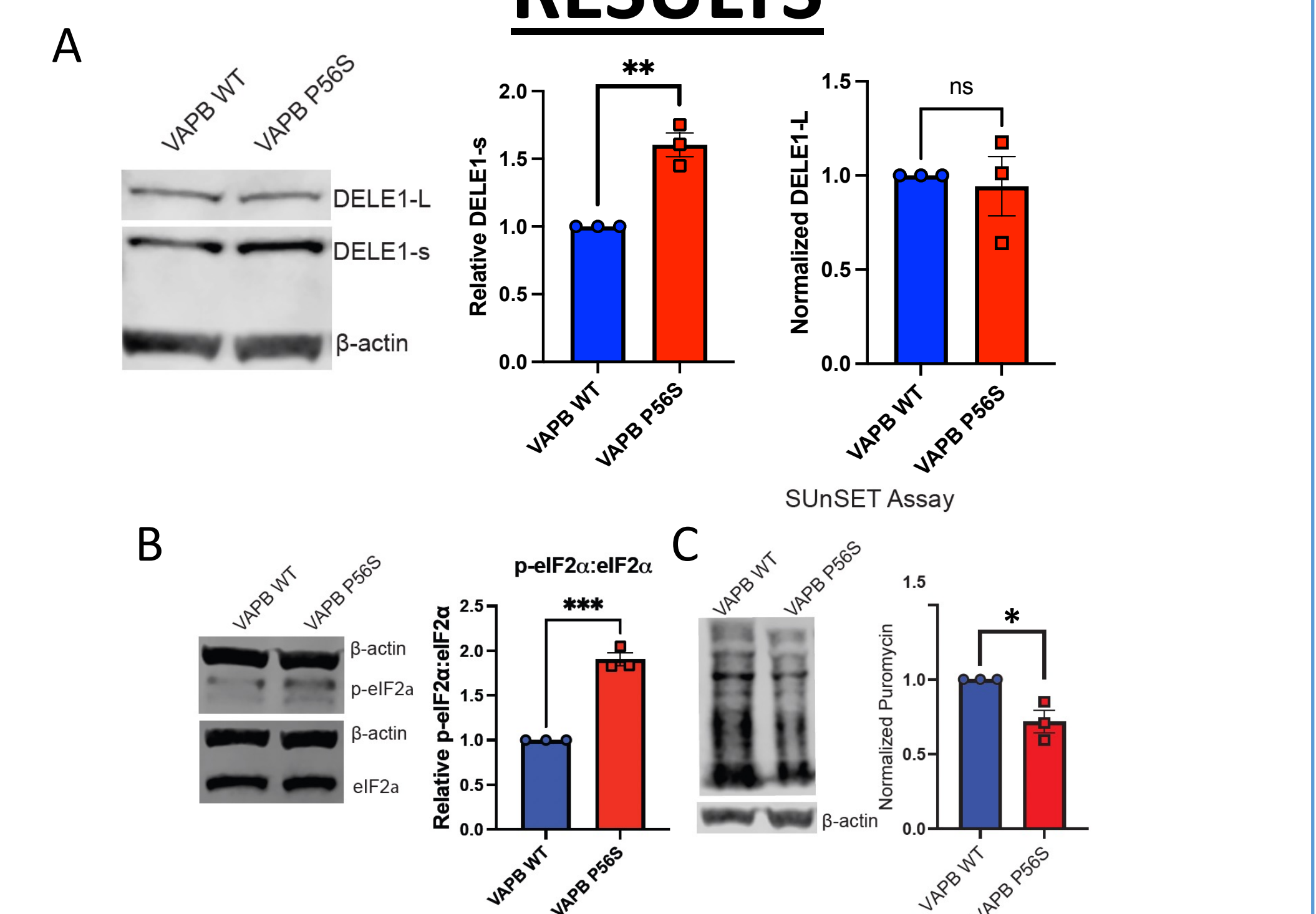


Figure 4: The Integrated Stress Response is Activated Through DELE1 in P56S Lines. Given the mitochondrial dysfunction, we reviewed the literature for a possible link between that and the dysregulated stress response we observed. We found that DELE1 is a protein that is cleaved in response to mitochondrial stress and observed an increase in the cleaved form (DELE1-s) in the P56S line. DELE1-s causes phosphorylation of p-eIF2 α , a classic marker of the Integrated Stress Response (ISR), which also causes a decrease in global translation levels, which was assayed through the use of the SUNSET assay, showing decreased levels of translation in the P56S lines.

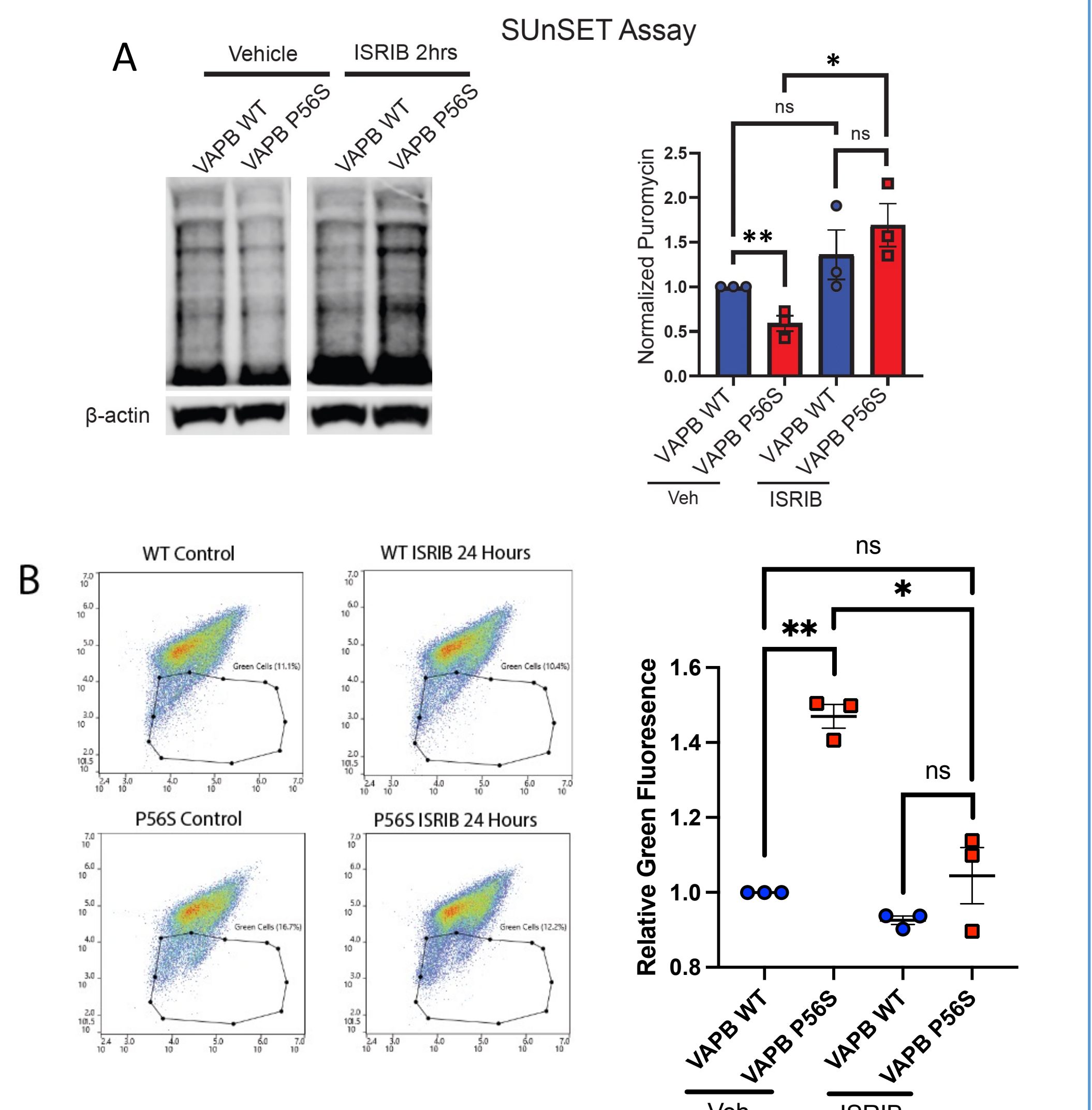


Figure 5: ISRIB Rescues Hypotranslation, Decreased MMP, and Decreased Neuronal Firing. Cells were dosed with 5ug/mL of ISRIB (Integrated Stress Response inhibitor) and we observed rescue of the hypotranslation phenotype, the decreased MMP phenotype and the neuronal firing phenotype, indicating the cause of these phenotypes to be overactivation of the ISR in the VAPB P56S lines.

This publication was made possible by an NIH-funded predoctoral fellowship to Curran Landry T32 NS077888